

LIBERCOURT

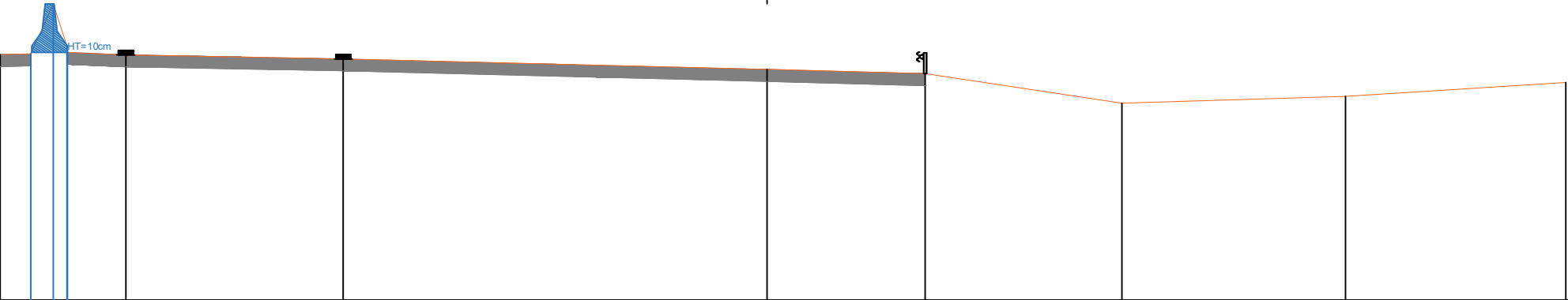
Autoroute A1

Sens Paris -> Lille

Profil P278

indice: 1

Sens Paris -> Lille



Echelle des longueurs : 1/100
Echelle des altitudes : 1/100

PC : 19.00 m

Altitudes TN	23.11	23.12	23.96	23.15	23.11	23.04	22.86	22.79	22.30	22.41	22.85
Distances à l'axe TN	-12.836	-12.326	-11.950	-11.710	-10.734	-7.094	-0.000	2.647	5.939	9.685	13.371
Distances partielles TN	0.510	0.376	0.240	0.976	3.640	7.094	2.647	3.292	3.745	3.686	